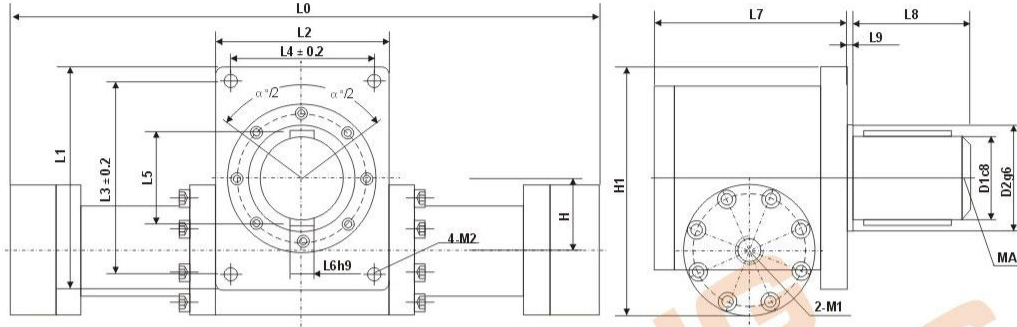


SB08 ST M D M F S



Size D M F S (in mm) 尺寸 D M F S (mm)

DA	MA max	D1	D2	H	H1	L0	L1	L2	L3	L4	L5	L6	L7	L8	L9	M1		M2
																01	02	
40	730	70	95	55	197	275+1.54 α ₁₎	184	164	160	140	79	20	174	105	6	G1/2	M22×1.5	M12×20
50	1297	80	105	66	231	288+1.75 α ₁₎	210	170	185	146	90	22	183	125	6	G1/2	M22×1.5	M12×20
63	2266	90	115	72	253	310+1.92 α ₁₎	232	194	200	164	100	25	210	140	6	G3/4	M27×2	M16×25
80	3987	95	125	86	292	370+2.09 α ₁₎	257	205	225	175	105	25	232	150	8	G3/4	M27×2	M16×25
100	7476	115	145	100	343	400+2.51 α ₁₎	306	234	265	194	129	32	264	165	8	G1	M33×2	M20×30
125	13141	125	155	116	390	464+2.83 α ₁₎	334	274	285	230	139	32	304	170	8	G1 1/4	M42×2	M24×35
140	18317	145	180	125	418	484+3.14 α ₁₎	354	286	305	240	161	36	310	200	10	G1 1/4	M42×2	M24×35
160	26583	165	200	140	464	511+3.49 α ₁₎	390	315	330	255	183	40	334	220	10	G1 1/2	M48×2	M30×45
180	36334	175	220	152	518	584+3.77 α ₁₎	440	390	380	330	195	45	400	240	12	G1 1/2	M48×2	M30×45
200	52335	195	240	170	578	611+4.40 α ₁₎	500	425	440	365	215	45	458	260	12	G1 1/2	M48×2	M30×45
220 ₃₎	92372	200	245	200	660	1338+5.62 α ₁₎	600	550	520	470 ₂₎	45	560	340	12	G1 1/2	M48×2	M36×55	
250 ₃₎	152416	220	275	255	775	1540+7.34 α ₁₎	700	590	620	510 ₂₎	45	600	380	12	G1 1/2	M48×2	M36×55	
280 ₃₎	182900	250	315	300	900	1700+8.34 α ₁₎	800	690	720	610 ₂₎	50	700	420	12	G1 1/2	M48×2	M36×55	
320 ₃₎	325720	320	395	320	980	1920+9.12 α ₁₎	900	790	820	710 ₂₎	56	750	480	12	G1 1/2	M48×2	M36×55	

NOTES:

DA=Piston φ

MA=Maximum output torque (NM)

α =Swiveling angle(0° ~ 360°)

¹⁾ =The customer according to requests to make selection

²⁾ =Only piston φ 220 to φ 320 mm, and form of key-seating construction is 3

³⁾ =Nominal pressure=14MPa

注解:

DA=活塞直径-φ

MA=最大输出扭矩 (NM)

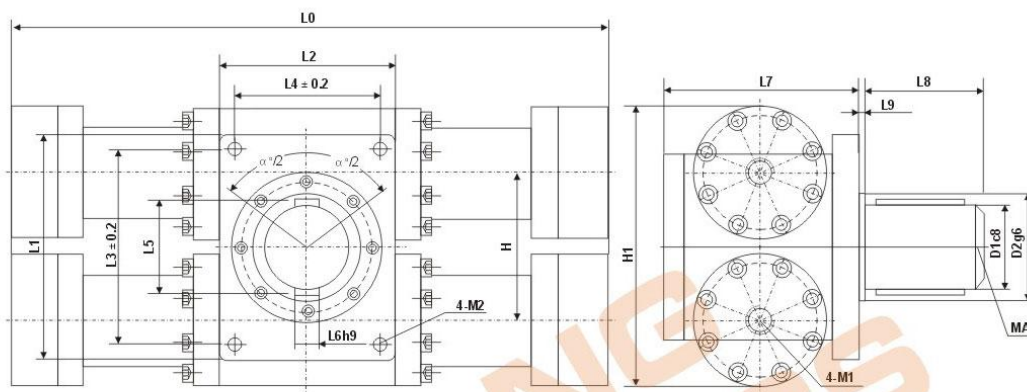
α =摆动角度(0° ~ 360°)

¹⁾ =客户按要求选定

²⁾ =仅活塞直径 φ 220 至 φ 320 mm, 平键形式为3个。

³⁾ =工作压力=14MPa

SB08 ST M G M F S



Size G M F S (in mm) 尺寸 G M F S (mm)

DA	MA _{max}	D1	D2	H	H1	L0	L1	L2	L3	L4	L5	L6	L7	L8	L9	M1		M2
																01	02	
40	1460	70	95	110	210	275+1.54 α ¹⁾	184	164	160	140	79	20	174	105	6	G1/2	M22×1.5	M12×20
50	2594	80	105	132	252	288+1.75 α ¹⁾	210	170	185	146	90	22	183	125	6	G1/2	M22×1.5	M12×20
63	4532	90	115	144	274	310+1.92 α ¹⁾	232	194	200	164	100	25	210	140	6	G3/4	M27×2	M16×25
80	7974	95	125	172	327	370+2.09 α ¹⁾	257	205	225	175	105	25	232	150	8	G3/4	M27×2	M16×25
100	14952	115	145	200	380	400+2.51 α ¹⁾	306	234	265	194	129	32	264	165	8	G1	M33×2	M20×30
125	26282	125	155	232	446	464+2.83 α ¹⁾	334	274	285	230	139	32	304	170	8	G1 1/4	M42×2	M24×35
140	36634	145	180	250	482	484+3.14 α ¹⁾	354	286	305	240	161	36	310	200	10	G1 1/4	M42×2	M24×35
160	53166	165	200	280	538	511+3.49 α ¹⁾	390	315	330	255	183	40	334	220	10	G1 1/2	M48×2	M30×45
180	72668	175	220	304	596	584+3.77 α ¹⁾	440	390	380	330	195	45	400	240	12	G1 1/2	M48×2	M30×45
200	104670	195	240	340	656	611+4.40 α ¹⁾	500	425	440	365	215	45	458	260	12	G1 1/2	M48×2	M30×45
220 ²⁾	184744	200	245	400	720	1338+5.62 α ¹⁾	600	550	520	470	2 ²⁾	45	560	340	12	G1 1/2	M48×2	M36×55
250 ³⁾	304832	220	275	510	850	1540+7.34 α ¹⁾	700	590	620	510	2 ²⁾	45	600	380	12	G1 1/2	M48×2	M36×55
280 ³⁾	365800	250	315	600	1000	1700+8.34 α ¹⁾	800	690	720	610	2 ²⁾	50	700	420	12	G1 1/2	M48×2	M36×55
320 ³⁾	651440	320	395	640	1060	1920+9.12 α ¹⁾	900	790	820	710	2 ²⁾	56	750	480	12	G1 1/2	M48×2	M36×55

NOTES:

DA=Piston φ

MA=Maximum output torque (NM)

α =Swiveling angle(0° ~ 360°)

¹⁾ =The customer according to requests to make selection

²⁾ =Only piston φ 220 to φ 320 mm, and form of key-seating construction is 3

³⁾ =Nominal pressure=14MPa

注解:

DA=活塞直径-φ

MA=最大输出扭矩 (NM)

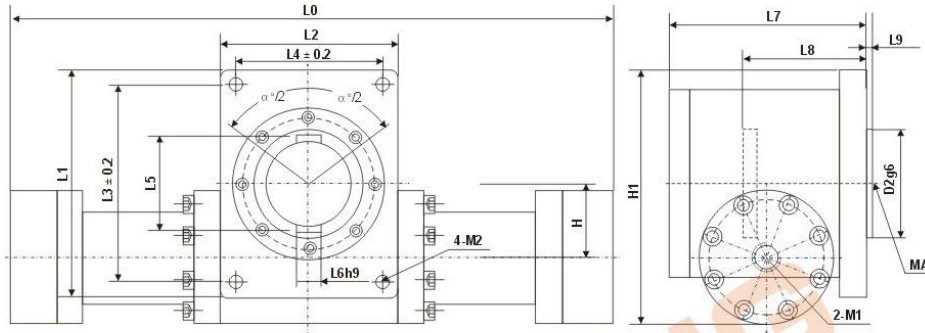
α =摆动角度(0° ~ 360°)

¹⁾ =客户按要求选定

²⁾ =仅活塞直径 φ 220 至 φ 320 mm, 平键形式为3个。

³⁾ =工作压力=14MPa

SB08 ST M D MF H



Size D MF H (in mm) 尺寸 D MF H (mm)

DA	MA max	D1	D2	H	H1	L0	L1	L2	L3	L4	L5	L6	L7	L8	L9	M1		M2
																01	02	
40	730	50	95	55	197	275+1.54 ^a	184	164	160	140	57.6	14	174	105	6	G1/2	M22×1.5	M12×20
50	1297	60	105	66	231	288+1.75 ^a	210	170	185	146	68.8	18	183	125	6	G1/2	M22×1.5	M12×20
63	2266	65	115	72	253	310+1.92 ^a	232	194	200	164	73.8	18	210	140	6	G3/4	M27×2	M16×25
80	3987	70	125	86	292	370+2.09 ^a	257	205	225	175	79.8	20	232	150	8	G3/4	M27×2	M16×25
100	7476	85	145	100	343	400+2.51 ^a	306	234	265	194	95.8	22	264	165	8	G1	M33×2	M20×30
125	13141	90	155	116	390	464+2.83 ^a	334	274	285	230	100.8	25	304	170	8	G1 1/4	M42×2	M24×35
140	18317	105	180	125	418	484+3.14 ^a	354	286	305	240	117.8	28	310	200	10	G1 1/4	M42×2	M24×35
160	26583	120	200	140	464	511+3.49 ^a	390	315	330	255	134.8	32	334	220	10	G1 1/2	M48×2	M30×45
180	36334	125	220	152	518	584+3.77 ^a	440	390	380	330	139.8	32	400	240	12	G1 1/2	M48×2	M30×45
200	52335	140	240	170	578	611+4.40 ^a	500	425	440	365	156.8	36	458	260	12	G1 1/2	M48×2	M30×45
220 ³⁾	92372	145	245	200	660	1338+5.62 ^a	600	550	520	470	2 ¹⁾	36	560	340	12	G1 1/2	M48×2	M36×55
250 ³⁾	152416	165	275	255	775	1540+7.34 ^a	700	590	620	510	2 ¹⁾	36	600	380	12	G1 1/2	M48×2	M36×55
280 ³⁾	182900	175	315	300	900	1700+8.34 ^a	800	690	720	610	2 ¹⁾	45	700	420	12	G1 1/2	M48×2	M36×55
320 ³⁾	325720	195	395	320	980	1920+9.12 ^a	900	790	820	710	2 ¹⁾	50	750	480	12	G1 1/2	M48×2	M36×55

NOTES:

DA=Piston ϕ

MA=Maximum output torque (NM)

α =Swiveling angle($0^{\circ} \sim 360^{\circ}$)

¹⁾ =The customer according to requests to make selection

²⁾ =Only piston ϕ 220 to ϕ 320 mm, and form of key-seating construction is 3

³⁾ =Nominal pressure=14MPa

注解:

DA=活塞直径- ϕ

MA=最大输出扭矩 (NM)

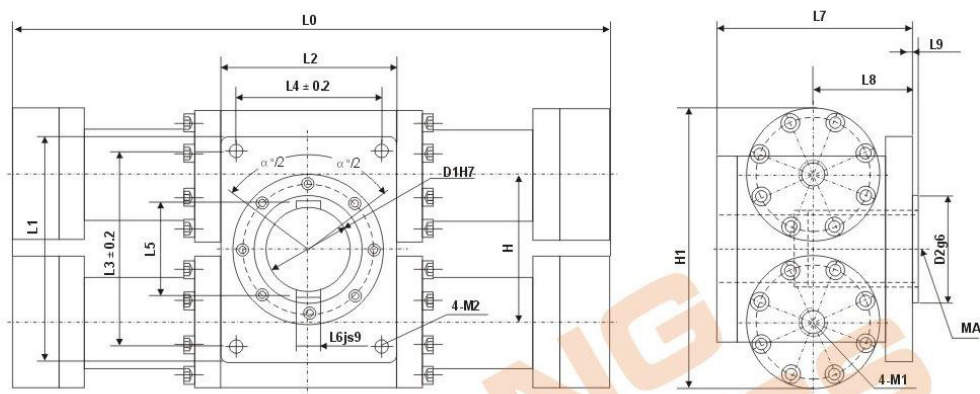
α =摆动角度($0^{\circ} \sim 360^{\circ}$)

¹⁾ =客户按要求选定

²⁾ =仅活塞直径 ϕ 220 至 ϕ 320 mm, 平键形式为3个。

³⁾ =工作压力=14MPa

SB08 ST M G MF H



Size G MF H (in mm) 尺寸 G MF H (mm)

DA	MA _{max}	D1	D2	H	H1	L0	L1	L2	L3	L4	L5	L6	L7	L8	L9	M1		M2
																01	02	
40	1460	50	95	110	210	275+1.54 α ¹⁾	184	164	160	140	57.6	14	174	105	6	G1/2	M22×1.5	M12×20
50	2594	60	105	132	252	288+1.75 α ¹⁾	210	170	185	146	68.8	18	183	125	6	G1/2	M22×1.5	M12×20
63	4532	65	115	144	274	310+1.92 α ¹⁾	232	194	200	164	73.8	18	210	140	6	G3/4	M27×2	M16×25
80	7974	70	125	172	327	370+2.09 α ¹⁾	257	205	225	175	79.8	20	232	150	8	G3/4	M27×2	M16×25
100	14952	85	145	200	380	400+2.51 α ¹⁾	306	234	265	194	95.8	22	264	165	8	G1	M33×2	M20×30
125	26282	90	155	232	446	464+2.83 α ¹⁾	334	274	285	230	100.8	25	304	170	8	G1 1/4	M42×2	M24×35
140	36634	105	180	250	482	484+3.14 α ¹⁾	354	286	305	240	117.8	28	310	200	10	G1 1/4	M42×2	M24×35
160	53166	120	200	280	538	511+3.49 α ¹⁾	390	315	330	255	134.8	32	334	220	10	G1 1/2	M48×2	M30×45
180	72668	125	220	304	596	584+3.77 α ¹⁾	440	390	380	330	139.8	32	400	240	12	G1 1/2	M48×2	M30×45
200	104670	140	240	340	656	611+4.40 α ¹⁾	500	425	440	365	156.8	45	458	260	12	G1 1/2	M48×2	M30×45
220 ²⁾	184744	145	245	400	720	1338+5.62 α ¹⁾	600	550	520	470	2 ²⁾	36	560	340	12	G1 1/2	M48×2	M36×55
250 ³⁾	304832	165	275	510	850	1540+7.34 α ¹⁾	700	590	620	510	2 ²⁾	36	600	380	12	G1 1/2	M48×2	M36×55
280 ³⁾	365800	175	315	600	1000	1700+8.34 α ¹⁾	800	690	720	610	2 ²⁾	45	700	420	12	G1 1/2	M48×2	M36×55
320 ³⁾	651440	195	395	640	1060	1920+9.12 α ¹⁾	900	790	820	710	2 ²⁾	50	750	480	12	G1 1/2	M48×2	M36×55

NOTES:

DA=Piston φ

MA=Maximum output torque (NM)

α =Swiveling angle(0° ~ 360°)

¹⁾ =The customer according to requests to make selection

²⁾ =Only piston φ 220 to φ 320 mm, and form of key-seating construction is 3

³⁾ =Nominal pressure=1.4MPa

注解:

DA=活塞直径-φ

MA=最大输出扭矩 (NM)

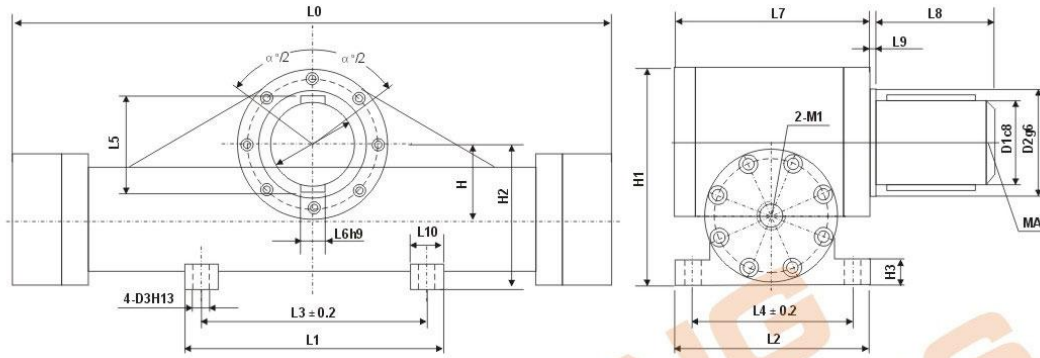
α =摆动角度(0° ~ 360°)

¹⁾ =客户按要求选定

²⁾ =仅活塞直径 φ 220 至 φ 320 mm, 平键形式为3个。

³⁾ =工作压力=1.4MPa

SB08 ST M D MS S



		Size D M S S (in mm)																尺寸 D M S S (mm)			
DA	MA max	D1	D2	D3	H	H1	H2	H3	L0	L1	L2	L3	L4	L5	L6	L7	L8	L9	L10	M1	
																				01	02
40	730	70	95	13.5	55	188	110	25	275+1.54 α ₁	170	190	140	160	79	20	154	105	6	30	G1/2	M22×1.5
50	1297	80	105	13.5	66	215	131	25	288+1.75 α ₁	176	215	146	185	90	22	163	125	6	30	G1/2	M22×1.5
63	2266	90	115	17.5	72	236	142	35	310+1.92 α ₁	204	240	164	200	100	25	190	140	6	40	G3/4	M27×2
80	3987	95	125	17.5	86	267	168	35	370+2.09 α ₁	215	265	175	225	105	25	212	150	8	50	G3/4	M27×2
100	7476	115	145	22	100	306	195	35	400+2.51 α ₁	239	310	194	265	129	32	244	165	8	60	G1	M33×2
125	13141	125	155	26	116	354	228	40	464+2.83 α ₁	280	335	230	285	139	32	284	170	8	70	G1 1/4	M42×2
140	18317	145	180	26	125	377	246	40	484+3.14 α ₁	290	355	240	305	161	36	290	200	10	70	G1 1/4	M42×2
160	26583	165	200	33	140	415	274	45	511+3.49 α ₁	325	400	255	330	183	40	314	220	10	80	G1 1/2	M48×2
180	36334	175	220	33	152	475	303	45	584+3.77 α ₁	400	450	330	380	195	45	380	240	12	80	G1 1/2	M48×2
200	52335	195	240	33	170	520	333	45	611+4.40 α ₁	435	510	365	440	215	45	438	260	12	80	G1 1/2	M48×2
220 ₃	92372	200	245	38	200	660	400	80	1338+5.62 α ₁	800	540	700	460 ₂	45	560	340	12	100	G1 1/2	M48×2	
250 ₃	152416	220	275	38	255	775	475	80	1540+7.34 α ₁	1050	580	900	480 ₂	45	600	380	12	150	G1 1/2	M48×2	
280 ₃	182900	250	315	38	300	900	550	90	1700+8.34 α ₁	1200	680	1000	580 ₂	50	700	420	12	200	G1 1/2	M48×2	
320 ₃	325720	320	395	38	320	980	600	95	1920+9.12 α ₁	1300	720	1100	620 ₂	56	750	480	12	200	G1 1/2	M48×2	

NOTES:

$$DA = \text{Piston } \phi$$

MA=Maximum output torque (NM)

 α =Swiveling angle($0^{\circ} \sim 360^{\circ}$)

¹¹ =The customer according to requests to make selection

²⁾ = Only piston $\phi 220$ to $\phi 320$ mm, and form of key-seating construction is 3

^{a1} =Nominal pressure=1.4MPa

注解:

$$DA = \text{活塞直径} - \phi$$

MA=最大输出扭矩 (NM)

(1) α = 摆动角度($0^\circ \sim 360^\circ$)

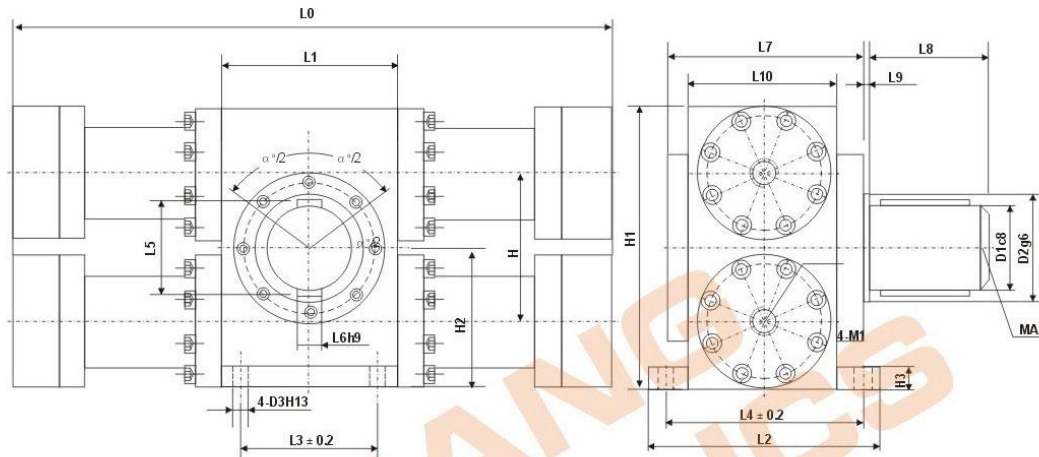
11 = 客户按要求选定

²⁾ = 仅活塞直径 $\phi 220$ 至 $\phi 320$ mm, 平键形式为 3 个。

$$= \text{工作压力} = 14 \text{ MPa}$$

Mounting G MS S / 安装方式 G MS S

SB08 ST M G MS S



Size G MS S (in mm) 尺寸 G MS S (mm)

DA	MA max	D1	D2	D3	H	H1	H2	H3	L0	L1	L2	L3	L4	L5	L6	L7	L8	L9	L10	M1	
																				O1	O2
40	1460	70	95	13.5	110	220	110	25	275+1.54 α ₁	170	190	140	160	79	20	154	105	6	30	G1/2	M22×1.5
50	2594	80	105	13.5	132	262	131	25	288+1.75 α ₁	176	215	146	185	90	22	163	125	6	30	G1/2	M22×1.5
63	4532	90	115	17.5	144	284	142	35	310+1.92 α ₁	204	240	164	200	100	25	190	140	6	40	G3/4	M27×2
80	7974	95	125	17.5	172	336	168	35	370+2.09 α ₁	215	265	175	225	105	25	212	150	8	50	G3/4	M27×2
100	14952	115	145	22	200	390	195	35	400+2.51 α ₁	239	310	194	265	129	32	244	165	8	60	G1	M33×2
125	26282	125	155	26	232	456	228	40	464+2.83 α ₁	280	335	230	285	139	32	284	170	8	70	G1 1/4	M42×2
140	36634	145	180	26	250	492	246	40	484+3.14 α ₁	290	355	240	305	161	36	290	200	10	70	G1 1/4	M42×2
160	53166	165	200	33	280	548	274	45	511+3.49 α ₁	325	400	255	330	183	40	314	220	10	80	G1 1/2	M48×2
180	72668	175	220	33	304	606	303	45	584+3.77 α ₁	400	450	330	380	195	45	380	240	12	80	G1 1/2	M48×2
200	104670	195	240	33	340	666	333	45	611+4.40 α ₁	435	510	365	440	215	45	438	260	12	80	G1 1/2	M48×2
220 ₃	184744	200	245	38	400	600	400	80	1338+5.62 α ₁	800	540	700	460	21	45	560	340	12	100	G1 1/2	M48×2
250 ₃	304832	220	275	38	510	445	475	80	1540+7.34 α ₁	1050	580	900	480	21	45	600	380	12	150	G1 1/2	M48×2
280 ₃	365800	250	315	38	600	515	550	90	1700+9.12 α ₁	1200	680	1000	580	21	50	700	420	12	200	G1 1/2	M48×2
320 ₃	651440	320	395	38	640	565	600	95	1920+9.12 α ₁	1300	720	1100	620	21	56	750	480	12	200	G1 1/2	M48×2

NOTES:

$$DA = \text{Piston } \phi$$

MA=Maximum output torque (NM)

 α =Swiveling angle($0^{\circ} \sim 360^{\circ}$)

¹¹ =The customer according to requests to make selection

²¹ = Only piston ϕ 220 to ϕ 320 mm, and form of key-seating construction is 3²¹ =Nominal pressure=1.4MPa

注解:

$$DA = \text{活塞直径} - \phi$$

MA=最大输出扭矩 (NM)

 α = 摆动角度($0^{\circ} \sim 360^{\circ}$)

" =客户按要求选定

²⁾ = 仅活塞直径 $\phi 220$ 至 $\phi 320$ mm, 平键形式为 3 个。

3) 工作压力 = 1.4 MPa

