

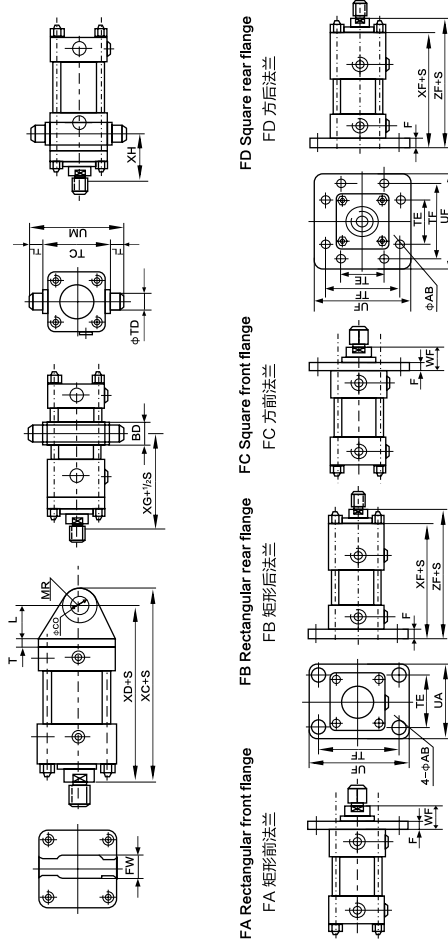
CA TC A FA C
TB CB FD

Installation dimensions / 安装尺寸

CA Tall single earring seat
CA 肩部单耳座

TC Intermediate shaft pin
TC 中间轴销

TA Head shaft pin
TA 头部轴销



Installation & outline dimensions 安装及外形尺寸

Bore缸径 D	40	50	63	80	100	125	140	150	160	180	200	220	250
ΦCD	16	20	32	32	40	50	63	63	70	80	90	100	100
FW 耳座	25	32	40	40	50	63	80	80	80	110	125	125	125
L	28	33	48	55	65	77	95	95	107	118	134	145	140
CA	MR	16	20	32	32	40	50	63	70	80	90	100	100
T	10	12	14	17	19	23	25	27	30	32	36	40	45
XD	209	230	261	291	316	365	400	412	445	480	526	550	596
XC	225	250	292.5	322.5	356	415	463	475	516	560	616	650	696
BD	28	33	43	53	58	78	78	88	98	108	117	117	117
TC	69	85	98	116	145	175	195	206	218	243	272	300	335
ΦTD	20	25	32	32	40	50	63	63	70	80	90	100	100
TL	20	25	32	31.5	40	50	63	63	70	80	90	100	100
UM	109	135	162	182	225	275	321	332	360	403	452	500	535
XG	113	121	132	146	156	177	188	194	207	216	232	241	271
ΦAB	62	66	74	82	89	103	112	112	126	136	145	155	165
XA	11	14	18	18	22	26	26	30	33	33	36	42	45
TE	11	13	15	18	20	24	26	28	31	33	37	41	46
FA	TE	46	58	65	87	109	130	145	155	170	185	206	230
UB	95	115	132	155	190	224	250	270	285	315	355	395	425
F	UB	69	85	98	118	150	175	195	210	225	243	272	310
FB	TE	46	58	65	87	109	130	145	155	170	185	206	230
UF	118	145	165	190	230	272	300	320	345	375	425	475	515
WD	41	43	50	53	60	69	76	88	88	92	101	111	111
XF	152	168	176	202	212	244	256	268	284	308	368	346	392
ZF	152	198	213	237	252	289	306	318	339	365	393	406	457

This series of hydraulic cylinders, featuring simple structure, reliable working, easy assembly/disassembly, easy maintenance, optional cushions and various mounting modes etc, is applicable for hydraulic driving for engineering machinery, lifting & transport machinery and mining machinery. Working pressure 16MPa, bore 40 ~ 250mm.

本系列液压缸具有结构简单、工作可靠、装拆方便、易于维修、可带缓冲装置及安装型式多样等特点。适用于工程机械、起重、运输机械及矿山机械的液压传动。工作压力16MPa、缸径40~250mm。

Specifications / technical parameters 规格/技术参数

缸径 Bore Dmm	杆径 Rod diameter d mm		速比 Ratio		16MPa		最大行程 Maximum travel mm	
	1.33	1.16	2	2	推力 Thrust KN	拉力 Pull KN	1	2
40	20	22	25	25	20.11	14.02	12.25	6000
50	25	28	32	32	31.42	21.56	18.55	8000
63	32	35	45	45	49.88	37.01	24.43	8000
80	40	45	55	55	80.42	54.98	42.41	10000
[90]	45	50	63	63	101.79	76.37	51.91	10000
100	50	55	70	70	125.66	94.25	64.08	16000
[110]	55	63	80	80	152.06	114.04	71.63	16000
125	63	70	90	90	196.35	146.47	94.56	16000
[140]	70	80	100	100	246.30	184.73	120.54	16000
150	75	85	105	105	282.74	212.06	144.20	16000
160	80	90	110	110	321.70	241.27	169.65	16000
[180]	90	100	125	125	407.15	305.36	210.80	16000
200	100	110	140	140	502.64	376.99	256.35	16000
[220]	110	125	160	160	608.21	456.16	286.51	16000
250	125	140	180	180	785.40	589.05	378.25	16000

Model designation 型号含义

